



Dreamlike illusion awaits at
Maya Ubud Resort & Spa 5★

maya
ubud

A Dreamlike Heavenly Resort



Vibrant Ubud

Experience the vibrant town of Ubud from museum, galleries, temples, traditional market, art shops, restaurants and cafes abound.



10+10 Hectares

The 108 suites and villas unfold gently across 10 hectares of lush tropical landscape, with an additional 10 more hectares of rice fields and Maya Farm.



Design Hotel

Award-winning architectural firm Denton Corker Marshall designed Maya by blending Balinese Village soul with contemporary details.



Located at the Heart of Ubud



01

Location & Shuttle

The leisurely 1 km distance to the drop-off point takes only about 5 minutes by Maya's shuttle bus.



02

Key Attractions

Delve into Bali's cultural roots by experiencing Ubud's tradition first-hand with the locals.



03

Experience Ubud

Ubud's finest local artisans and culinary delights just a few minutes away from our Resort.



Chronicles of Maya Ubud

Dear Partner,

I would like to thank you for the interest in our resorts, hoping to welcome you very soon.

Since the start of operations in 2001, Maya Ubud Resort & Spa has been one of the preferred destination for thousands of guests from all over the world. For the past 20 years we have been committed to deliver magical moments to our discerning guests.

After completing a full renovation of all Suites & Villas and adding some exciting facilities such as Kids Club and Maya Farm, we strengthen our commitment to deliver unique experiences.

Regards,
Jesus Gisbert
General Manager at Maya Resorts



Architectural Concept & Design

“There’s growing concern now among younger architects that we should learn from our past – that the way we build in the past was sustainable.”

– Budiman Hendropurnomo
Denton Corker Marshall Architect





Suites & Villas Overview

Accommodation Types	#
Impressive Forest Suite	36
Impressive Forest Corner Suite	12
Heavenly Jacuzzi Villa	19
Heavenly Pool Villa	38
Heavenly Two Bedroom Pool Villa	2
Maya Presidential Villa	1

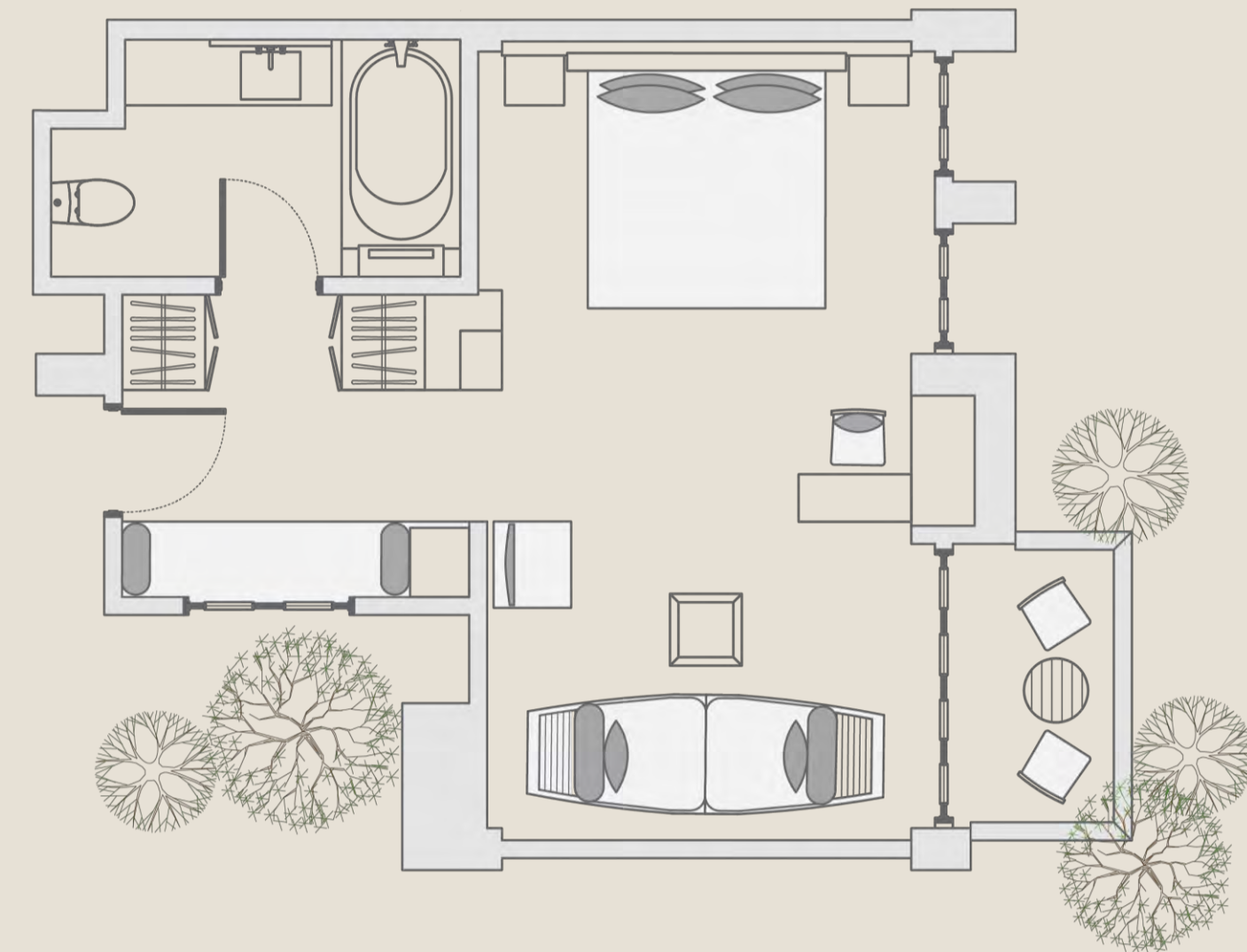
Amenities

King bed (200 x 200cm) or two single beds (120cm x 200cm), individually controlled air conditioning, wireless internet, private bath & shower, private balcony, satellite television with movie channels, 24/7 live service e-concierge system, safety deposit, mini bar, iron & ironing board, hairdryer, JBL speaker, 49-inch smart LED TV, coffee machine.



Impressive Forest Suite

Expansive windows and private balconies overlook a misty valley or lush rice terraces, ensuring that your rejuvenating connection with nature remains at full strength.



48 sqm



1 King (200x200) /
2 Single (120x200)



Max 4 Persons



Connecting
Available



Private Balcony

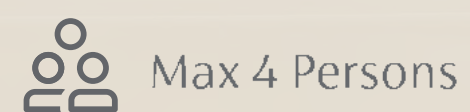
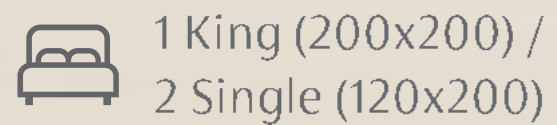
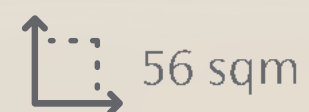
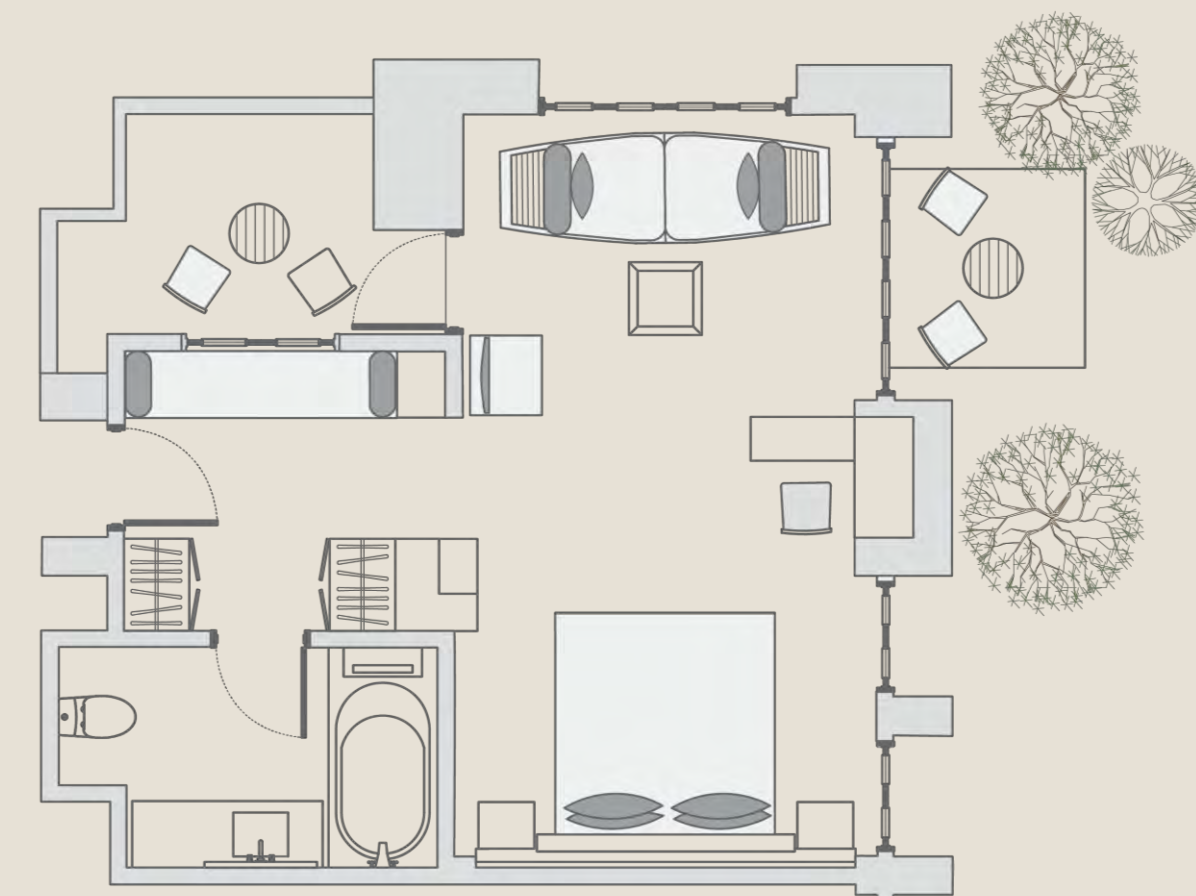


Views of Rice Paddy Field /
Petanu River Valley



Impressive Forest Corner Suite

Believe the math: one corner equals two capacious balconies. Admire the lush vegetation in the sanctuary from your expansive guestroom, adorned with Bali's creative traditions.








Heavenly Jacuzzi Villa

Rejoice in your choice when you alternate between daybed and jacuzzi in a lush, private garden and take tropical indulgence to a whole new level.




 245 sqm

 1 King (200x200) /
2 Single (120x200)

 Max 4 Persons

 Outdoor Whirlpool Tub

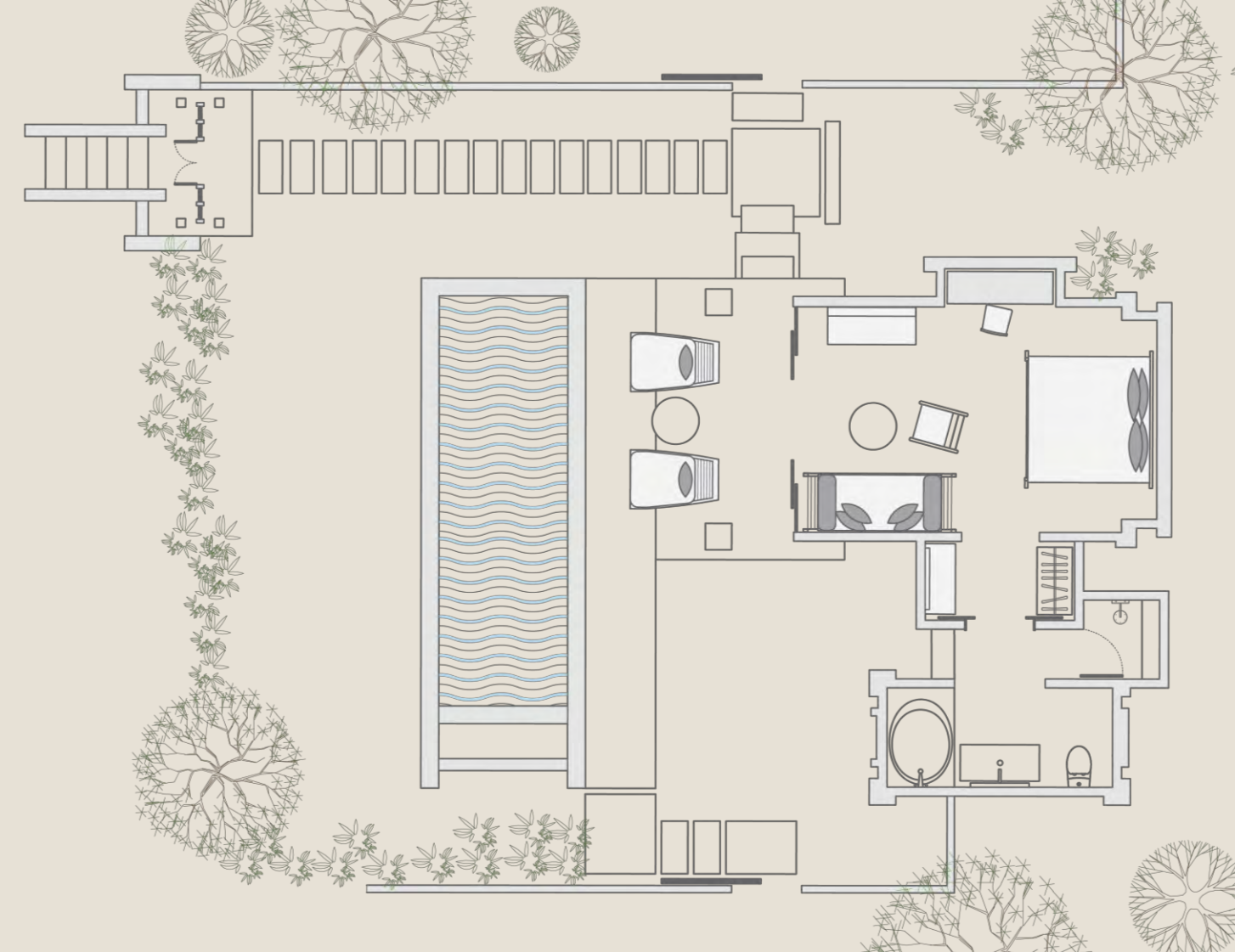
 Balinese Garden &
Terrace

 Connecting Villas Available



Heavenly Pool Villa

From the traditional thatched roof and canopied bed to the locally handcrafted furnishings, each Villa is a sublime salute to Balinese refinement and an indulgence of space and seclusion.



360 sqm

1 King (200x200) /
2 Single (120x200)

Max 4 Persons

Outdoor Private Pool
(2.5m x 5.5m)

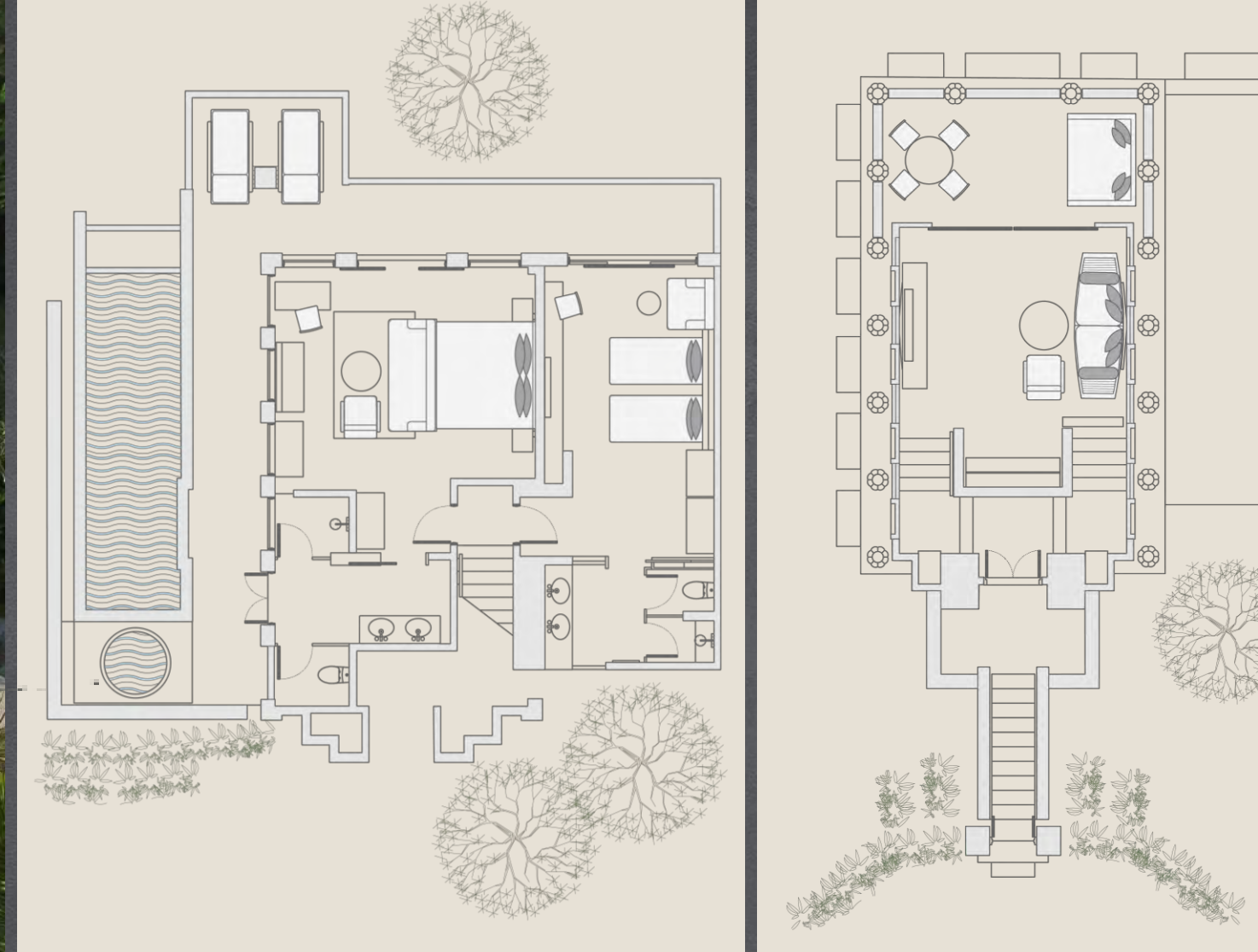
Balinese Garden &
Terrace

Connecting Villas Available



Heavenly Two-Bedroom Pool Villa

Limited to just two units, these duplex two-bedroom villas offer breath-taking views of the mystical valley below that are best enjoyed when the morning sun stirs the curling mist.



385 sqm



1 King (200x200) /
2 Single (120x200)



Max 8 Persons



Outdoor Private Pool
(2.6m x 8.2m)



Balinese Garden &
Terrace



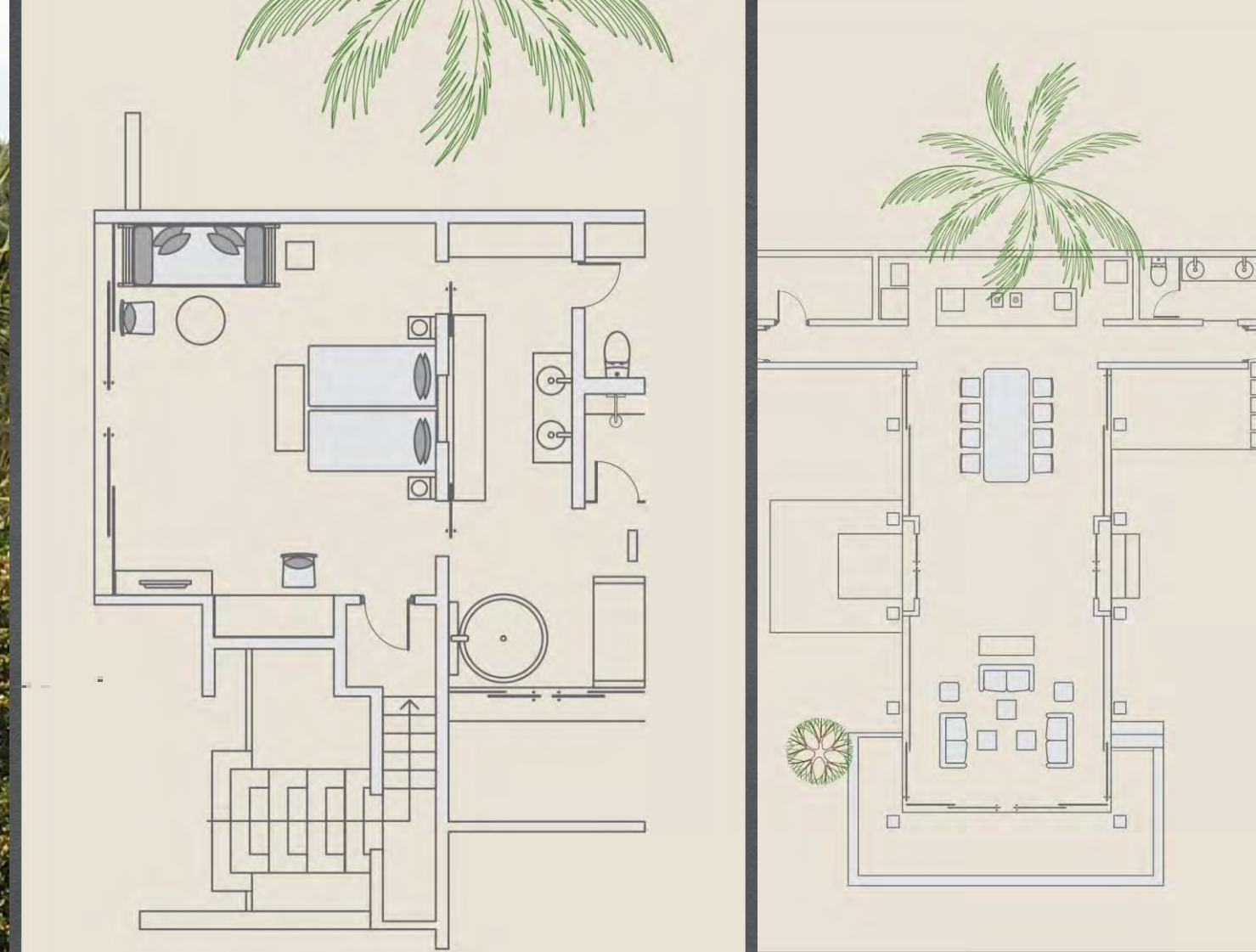
Living Room



Outdoor
Whirlpool Tub

Maya Presidential Villa

Ease yourselves into this newly revamped heavenly headquarter. Two bedrooms, 30sqm swimming pool, a living room and a spacious area large enough for intimate events.



-  950 sqm
-  1 King (200x200) / 2 Single (120x200)
-  Max 8 Persons
-  Outdoor Private Pool (30sqm, 1,2m deep)
-  Balinese Garden & Terrace
-  Separate Living Area for small events
-  Full Kitchen Set Up
-  Outdoor Rainforest Shower



Mayasari

Adjacent to the main swimming pool, our signature restaurant offers relaxed all-day dining inside and alfresco on the terrace.

Spoil your
Taste Buds



Tree Bar

Follow the colorful bottles visible from the main lobby and enter Tree Bar: an elegant, open-plan pavilion perched above the lush valley.

River Cafe

To gaze across the sparkling pool that overhangs the banks of the Petanu River is to marvel at the spectacular vertical rainforest wall.





Uncover Ubud's Inner Peace

Embark on an exotic, sensory journey where invigorating spa treatments take place amidst the raw beauty of the teeming rainforest.

Walkways from the central reception pavilion lead through lush foliage to private, daybed-equipped treatment pavilions.





Relax by
the Nature

Infinity Riverside Pool

Infinity Forest Pool



Tennis Court

Bring out your inner sporty side with our tennis facility. 33,40 x 16,38 m, heaven for tennis enthusiasts.



Fitness Center

Stay fit! Don't miss the chance to work out during your vacation in our fitness center overlooking lush greeneries.



Yoga Pavilion

Flow in time and heal your soul with our well-being activities guided by our certified instructors.



Suit Your Every Needs

Other Facilities

Forest Trail
Departure Lounge
Meeting Room

Coming Soon

Kids Club
Maya Farm





Villa Grill



Romantic Dinner

Enhance Your Stay



Floating Journey



Picnic Basket



Wedding In Paradise

From intimate ceremonies to elaborate galas, our riverside retreat sets a captivating stage for your wedding day.

Exchange vows above the Petanu River on the Ceremonial Plaza, Starlight Deck, or at our Balinese temple for a more cultural experience.





Discover your own Magical Journey

